



Tidings



THE NEWSLETTER OF THE FRIENDS OF THE BOSTON HARBOR ISLANDS, INC.

* * * * *
* V O L . 6, N O . 5 * W i n t e r 1 9 8 8 *
* * * * *

Annual Meeting '89

Tenth Anniversary festivities will highlight the FRIEND'S Annual Meeting on Sunday, January 29, 1989. The meeting will be held from 2:00 P.M. until 4:00 P.M., in the Hull Room at the Charlestown Navy Yard.

The Charlestown Navy Yard is part of the Boston National Historical Park and the home of the U.S.S. Constitution, "Old Ironsides". Plan to arrive in plenty of time to explore this historic vessel, tour the Navy Yard, and tour the Constitution Museum.

It's easy to get to the Charlestown Navy Yard: by public transportation either the water shuttle service from Long Wharf or the #93 bus from downtown Boston; "shoe leather express" (walking); or by car. There is plenty of free parking Yard.

An Annual Meeting announcement will be mailed in January, but it's not too early to save this special date.

Old Fashioned Christmas Caroling

Join the FRIENDS for caroling around Beacon Hill on Sunday, December 18, 1988 at 4:00 P.M. in the Beacon House, 19 Myrtle St. at Joy St. Members of Nix's Mates, our singing group, will be along to keep us on key! Following the caroling at 5:30, we will meet back at Beacon House for a pot luck supper with the residents of Beacon House and more caroling.

All are welcome, bring some food to share and join us in wishing everyone a great holiday season. Call the office if you have any questions.



Thompson Island Trip

The FRIENDS will begin their tenth year celebrations with their Annual Cruise to Thompson Island on January 1, 1989. Boats will leave from Kelly's Landing, William O'Day Blvd., South Boston. The schedule is as follows:

<u>Leave Kelly's</u>	<u>Leave Thompson Island</u>
12 noon	4:00 P.M.
12:30 P.M.	4:30 P.M.
1:15 P.M.	5:00 P.M.

Please plan to return on the corresponding boat.

Cost is \$10.00 for adults, \$9.00 for seniors and groups of 12 or more, \$8.00 for members of FBHI, \$6.00 for children 12 and under, babies 3 and under are free.

Remember to dress for the weather, the ground may be wet. We will have a warm room available and offer hot drinks. Please bring your own lunch or snacks. Experienced volunteers will give tours of the island, or you may explore on your own.

Paid reservations are recommended, please send your check with a self addressed, stamped envelope to: New Year's Trip, FBHI, PO Box 9025, Boston, MA 02114.

JOIN US FOR THE START OF OUR TENTH YEAR CELEBRATIONS.

New Water Shuttle Service Announced

Boston Harbor Cruises is now providing seven day a week service between Long Wharf and the Charlestown Navy Yard. The boat ride takes 10 minutes and the one way fare is \$1.00. Departure is every half hour.

The water shuttle is being operated under contract to the MBTA and there is free shuttle bus service within the Navy Yard complex.

You can take the boat ride to the FRIEND'S Annual Meeting on Jan. 29, 1989.

MDC and DEM Appreciation

"On behalf of the staff of the MDC Harbor Islands I offer my thanks for assisting us in providing visitor services to the 150,000 people who visited the Harbor Islands in 1988. Support groups like the Friends are essential for increasing public awareness and appreciation of the natural and cultural resources of the Harbor Islands.

"Volunteers devoted an outstanding array of skills to tasks ranging from litter pick up to slide presentations to singing performances to trail clearing to question answering, and more! These efforts enhance visitors' experiences on the islands to a degree that would otherwise be impossible to achieve.

"I cannot emphasize enough the important role that volunteers play in the park. Your reliable, contagious enthusiasm for the islands are priceless. Thank you all.

"I join the staff in wishing everyone a happy winter. We look forward to working together with you in 1989!"

--Jim Boyle

Park Supervisor of MDC Harbor Islands

We, the staff at the D.E.M. Harbor Island State Park would like to thank you and the volunteers for a fruitful and safe summer. We enjoy, benefit and grow from all the generosity of the volunteers both on and off season.

I leave them this season with a few Haiku to think about.

Lightning flickering
without a sound...how far away
the night-heron cries

Sun low in the west....
moon floating up in the east...
flowers in shadow...

Puffed by a wind, sails
glint on the sea in a quick
bright summer shower...

Ellenor Yahrmarkt
Visitor Services Supervisor

Boston Light

October 15, the FRIENDS sponsored a most successful trip to Boston Light on Little Brewster island. The capacity list of passengers enjoyed well nigh perfect autumn weather.

Among the passengers were four with close ties to the light. Dexter Norwood and his sister, Fay Norwood Achor, were two of the nine brothers and sisters living at the light in the 1930's when their father, Ralph Norwood, was assistant lightkeeper. The third of the quartet was Dexter Norwood's wife, Helen and the fourth Willie E. Emerson whose mother, Georgia Norwood, was born at the light April 11, 1932. Willie Emerson, born in Maine in 1962, is the author of "First Light" based on his aunts' and uncles' reminiscences of their early years at the light. Though Willie Emerson never lived at Boston Light he had a sample of island life last summer when he was island manager on Gallop's Island.

Dexter Norwood had many yarns to spin including one about the family's dog, Spunky. Spunky occasionally took advantage of the bar, which is exposed at low tide,

to cross over to Great Brewster (Big Brewster to the Norwoods). One day he waited too long on Big Brewster. On his way back the tide swept him out to sea. He was rescued by a fisherman, taken to the Coast Guard in Boston, identified as belonging on Boston Light, and forthwith returned safe and sound to Little Brewster.

Dexter remembers the 18 or 20 cottages that occupied the west side of Great Brewster. When the Navy took over the island at the start of World War II, it notified the occupants that they should remove everything they wanted as it was going to demolish them. Only the foundations of a few of them survive.

Little Brewster has seen changes over the years. The big house where the Norwoods lived is gone. A new pier has been built. More changes are to come when the light is automated in 1990. The FRIENDS support the proposal that Little Brewster and Boston Light become part of the Boston Harbor Islands State Park which will assure access to the Island and protect against vandalism.

--John Lochhead

President's Column

Dear Friends:

This year seems to have gone by in the bat of an eyelash because the behind-the-scenes activities of the FRIEND'S organization is nonstop. There are many dedicated volunteers who help to make it all happen, off the islands as well as on.

At the October membership meeting, we presented the new FRIEND'S Organization by Function Chart. This had been developed by the Planning Committee and approved by the Board of Directors in June. This chart describes all of the areas where volunteers are involved. A copy of the chart and function descriptions is enclosed.

Please let us know your interest areas by completing the information that is part of the membership application/renewal form, and return it to the FRIENDS office. Someone will contact you to follow up.

The Planning Committee has decided to solicit individual members for ideas about future FRIENDS activities and projects, instead of conducting a membership survey. Here is another way to be an active FRIEND. Simply put your ideas on paper with these four criteria in mind: what, why, how, and when. You can send your ideas to me at the office. I'd be happy to talk with you about your ideas before you put them on paper; just call me at 523-8386 and leave a message. We're working on a short, medium, and long range plan for the FRIENDS which we will share at the Annual Meeting.

A healthy and happy New Year!

--Suzanne Gall Marsh

Spectacle Island

The following is a letter from Massachusetts Senate President William M. Bulger.

"Thank you for sending me your position statement on Spectacle Island and a copy of your letter to Secretary Hoyte.

"I fully appreciate the long standing efforts of the Friends of the Boston Harbor Islands in maintaining these unique environmental treasures for the many citizens of the Commonwealth who enjoy the use of the Islands during the spring, summer and fall.

"I support your position that Spectacle Island be developed as park land in conformance with the 1986 Boston Harbor Islands Master Plan."

MDC Trips

The MDC is offering some special programs this winter and spring. The first is Saturday, January 21 on Georges Island. Tuesday, February 21, is a Vacation Trip for Kids to Georges Island. And Saturday and Sunday, March 18 & 19 is a Peddocks Island Excursion. Call 727-5290 to pre-register and for more information.

The Search is on!

Members of the Nominating Committee: Judith Wolfe, Tawney Becker, and George Marsh would like to talk with you if you're interested in being on the FRIEND'S Board of Directors, serving as an officer, or serving as a committee chair.

The Board is comprised of 15 people and there is a scheduled turnover of about 50% every year. A Board term is for two years and the Board meets every two months. The new Directors will be elected at the Annual Meeting on January 29. A Director is expected to become involved in one Board committee and whatever (other) area they choose. You can refer to the organization function chart in this newsletter for a description of the Board committees.

If you have time and energy and would like to be considered as a Board member, officer, or committee chair, call Judith at 741-3228, Tawney at 492-4615, or George at 569-8395.

--S.G.M.



1985 · Donna J. Barr

Notes from Nancy's Diary

Since the last newsletter, I have been busy wrapping up the 1988 season on the islands, and working on the annual evaluation report for the Park agencies. The last few days of fall were peaceful on the islands. The reds and golds found in sumac and aspen were beautiful.

The MDC and DEM gave a wonderful luncheon party to all the on-island volunteers in early October. The pads of paper given out to each volunteer said "A Note from a 'Friend', FRIENDS of the Boston Harbor Islands" and include the emblems from the FRIENDS, DEM, and MDC. A neat cake was baked on George's Island in the shape of Nix's Mate. In addition, Nix's Mates entertained us with folk songs.

I had an opportunity to attend the Annual Conference on Volunteer Administration in Denver, CO. the title "Designing Tomorrow Today" gave participants from around the U.S. many new ideas to think about and plan for in our many programs. I have always said the volunteer program on the Islands is unique, and I was indeed the only person at the conference with volunteers on islands.

Many of you know that my husband had a stroke and is still at Spaulding Rehabilitation Hospital. Time these last two months has been spent not only in the office and at home at my computer, but visiting at the hospital and filling in the reams of paper work. I am almost finished with my thesis and my graduate program. Naturally my thesis is on Volunteer Administration using the wonderful program we have as an example.

I would like to share another personal note with you, realizing of course that our membership is made of people from a diverse religious background. In the address given by the Episcopal Bishop of Massachusetts, the Rt. Rev. David E. Johnson, to the members of the annual convention he said: "We Christians have the opportunity to express a concern for the environment and, by so doing, express a concern for God's world and the capacity of human beings to flourish in it. The world came into being by the creative act of God and is, therefore, a gift to us. The world may even be called a sacrament of creation, which is to be received and shared, enjoyed and celebrated, and then used in such a ways that its benefits can be passed on for our children and our children's children."

I felt really positive as I sat there listening. The organization I work for is doing something to preserve the environment for my grandchildren and yours. Whatever our religious background this work, including the Harbor and the Islands, was given to us to use, enjoy, and preserve for future generations.

Happy Thanksgiving, not only for the food on our tables, and the shelter over our head, but for the beauty we have been given in this world. A special THANKS to all the members of the FRIENDS who help us to work towards preserving and caring for that special space in the Harbor.

--Nancy Martin

Sea Embers

There are definite advantages to being an island volunteer. One is the special end of season overnight for volunteers. Its a wonderful time to see people we haven't seen since orientation. A few of us gathered together in mid-September for a pot luck barbecue and swapped stories of the summer. It was cool, but a very enjoyable evening.

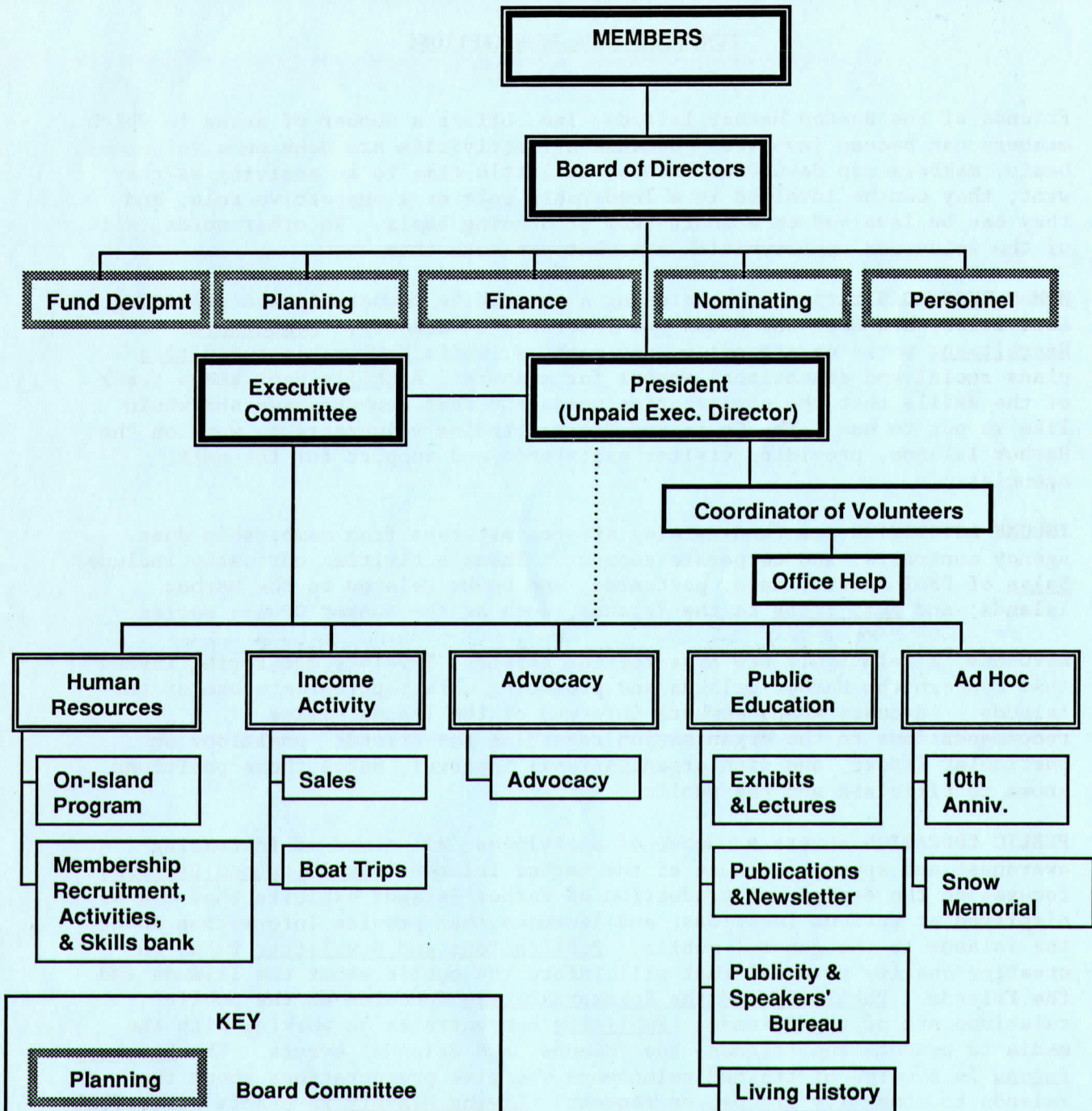
Sometime around 3 AM, I decided to enjoy my last night on the island and walk along the beach. There along the shores were hundreds of tiny, bright turquoise blue lights. They danced in the water and on the shore just like sparks from a fire - only these were blue, not red and in the water, not by a campfire. I immediately recognized these sparks as embers from the fires of the sea people (you know - those supposedly mythical beings that live under the water) and ran back to awaken my husband. At first he didn't believe me, but was soon convinced to come see for himself. He agreed the sea people were quite active that night. After some time, the lights died down and we went back to our tent. Subsequent investigation has led us to another theory involving bioluminescence in algae. Each theory holds some intrigue. In either case, it was a sight to be remembered.

--Wynelle Scenna



Friends of the Boston Harbor Islands

Organization by Function



KEY

Planning

Board Committee

Office Help

Staff

Ad Hoc

Function Area

Sales

Committee/Task Force

Approved June 20, 1988



Friends of the Boston Harbor Islands, Inc.

P.O. Box 9025
Boston, MA 02114

FUNCTION AREA DESCRIPTIONS

Friends of the Boston Harbor Islands, Inc. offers a number of areas in which members can become involved. Because all activities are done on a volunteer basis, members can devote as much or as little time to an activity as they want; they can be involved in a leadership role or a supportive role; and they can be involved on a short-term or ongoing basis. In other words, all of the volunteer opportunities are what you make them.

HUMAN RESOURCES refers to developing a supportive membership and providing activities that meet the needs and interests of members. Membership Recruitment works on attracting new members, while Membership Activities plans social and educational events for members. A Skills Bank keeps track of the skills that the organization needs and that members have and would like to put to use. The On-Island Program trains volunteers to work on the Harbor Islands, providing visitor assistance and support for the park agencies.

INCOME ACTIVITIES are fund-raising efforts separate from membership dues, agency contracts, and corporate support. These activities currently include: Sales of FBHI shirts, hats, postcards, and books related to the Harbor Islands; and Boat Trips to the islands, such as the Sunset Cruise series.

ADVOCACY, a relatively new area for the Friends, involves monitoring issues that concern the Harbor Islands and promoting safe, appropriate use of the islands. Advocacy keeps members informed of the issues, makes recommendations to the organization regarding the Friends' positions on particular issues, and with organizational approval, makes those positions known to officials and the public.

PUBLIC EDUCATION covers a number of activities, all aimed at increasing awareness and appropriate use of the Harbor Islands. Exhibits and Lectures focuses on the design and production of Harbor Islands exhibits that can be displayed at various locations, and lectures that provide information about the islands to the general public. Publications and Newsletter focus on creating quality material that will inform the public about the islands and the Friends. Publicity and the Speakers Bureau function as the public relations arm of the Friends. Publicity concentrates on working with the media to promote the islands, the Friends, and Friends' events. The Speakers Bureau is a corps of trained volunteers who give presentations about the islands to community groups, on request. Living History re-enacts historical incidents or anecdotes related to the islands and does the behind-the-scenes work for the re-enactments: researching material, writing scripts, and making costumes.

A few AD HOC programs--project-specific efforts rather than long-term, ongoing programs--are under way. These include plans for celebrating the Friends' Tenth Anniversary and the Edward Rowe Snow Memorial.

1989 MEMBERSHIP FORM

Here is your chance to become a member for a year and an extra month. Membership is on a calendar year basis, but we add December as a bonus. We urge you to join/renew now to receive full advantage of membership opportunities. We have many activities planned for this year including our 10th Anniversary Celebration.

Our Goals are to build a concerned constituency for the harbor islands, expand volunteer activity, and heighten public awareness of this marvelous natural resource which is accessible to so many.

Our Members: provide assistance to the Greater Boston community and the Boston Harbor Islands State Park through volunteers, informational services, and public education programs.

Your membership entitles you to:

- * discounts with the various boat companies in Boston and Hingham, as well as discounts on all Friends sponsored boat trips
- * FRIENDS newsletter: "Tidings"
- * special membership activities and opportunities to make new friends
- * opportunities to learn about the harbor islands
- * discounts on publications and sales items

It is only through your support that the Friends of Boston Harbor Islands will succeed in reaching our goals in this, our tenth year. Send your check made out to the Friends of the Boston Harbor Islands, Inc., today--we'll send you your 1989 membership card by return mail.

Join now so you can vote at the Annual Meeting (1/29/89) and receive a boat discount on the New Year's Day outing.

MEMBERSHIP APPLICATION (please print)

Name _____ Telephone _____

Address _____ City _____ Zip _____

TYPES OF ANNUAL MEMBERSHIP AVAILABLE

Note: Memberships and donations are tax deductible

Economy \$10 _____
Individual \$15 _____
Family \$28 _____
Sustaining \$50 _____
Patron \$100 _____

We will send you a membership card.

New _____ Renewal _____

VOLUNTEER OPPORTUNITIES

(please check your interests)

_____ Island Overnight weekends (June-September)
_____ Island Daytime (May - October)
_____ Membership activities
_____ Advocacy
_____ Income Activities
_____ Public Education
_____ Exhibits/art skills
_____ Publications and newsletter
_____ Living History
_____ Publicity and Speakers Bureau
_____ AdHoc/Other:

Additional Tax Deductible Gift \$ _____

How did you find out about us?

Please mail application with check payable to:
Friends of the Boston Harbor Islands, Inc.
PO Box 9025
Boston, MA 02114



Board of Directors

Suzanne Gall Marsh, President
Rich Williams, Vice-President
Tawney Becker, Clerk
George Marsh, Treasurer

Edward Barron
Bill Beebe
David Carey
Ann Prince Hecker
Susan Smith
James Stevens
John Stevens
Priscilla Williams
Judith Wolfe

Advisors

David Jansen, MDC
Al Kenney, DEM

Staff

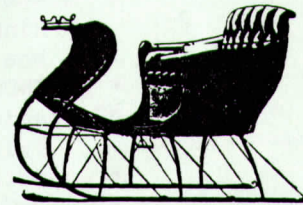
Nancy Martin, Coordinator of Volunteers
Gertrude Lutze, Secretary

Tidings

Robert Scenna, Editor
Wynelle Scenna, Assistant Editor

Calendar

December 8, New moon
December 18, Sunday Christmas Caroling
4:00 Beacon House
December 22, Full moon
January 1, Thompson Island Day Trip
January 15, Newsletter deadline
Contributions to Robert Scenna
17 Pine St. Arlington 02174
January 21, MDC George's Island Program
January 29, Annual Meeting 2 - 4PM
Charlestown Navy Yard, Hull Room
February 21, MDC Kids Vacation Trip
March 18 & 19, MDC Peddocks Island
Excursion



Friends of the Boston Harbor Islands, Inc.
P.O. Box 9025
Boston, MA 02114
(617) 523-8386
(617) 740-4290 Hingham



NONPROFIT ORG.
U. S. POSTAGE
PAID
BOSTON, MA
PERMIT NO. 52308

Address Correction Requested

