

Having trouble viewing this email? [Click here](#)



# Tidings

Friends of the Boston Harbor Islands  
September 28, 2011

Find us on Facebook 

or on our web page [FBHI.ORG](http://FBHI.ORG)

**Dear Stephanie,**  
-----

Hello Friends! We have a special issue of Tidings - we're rolling out a number of new sales items with some wonderful images. Please note while these items are available from our partners at Cafe Press, **we still have our other items** (books, clothes, cards, etc) available through our existing web page at <http://www.fbhi.org/friendsorderformbookshelf09.pdf>

-----

We asked, and received a lovely description by Wynell and Robert Scenna of their summer volunteering on Grape Island. Please read their wonderful account, and I hope you enjoy their photos as well. I first started with the Friends in the mid-80's as a volunteer and island coordinator, while volunteering on Grape Island. It's a very special place.

I know Robert and Wynell were not the only volunteers on (or off) islands this summer so please write an account of "what I did this summer" and email it on in to me at [chairmanfbhi@gmail.com](mailto:chairmanfbhi@gmail.com). Thank you.

-----

Upcoming events include:

Upcoming events include.

October 1st - Northern Light House Boat Trip  
October 1st - 77th Boston Harbor Regatta (Georges Island)  
October 7th - Mass Memories Road Show 'thank you' to crew  
October 15th - Fall Harbor Fest at Webb State Park (volunteers needed)  
October 16 - Boston Light Volunteers Appreciation Day  
October 19th - Science Symposium  
October 29th - Parkwide volunteers appreciation day

For all of these events, please see below for more information.

-----  
Have a wonderful October!



Walter Hope, Co-Chair  
PO Box 121020, Boston MA 02112 for personal notes, and stories...

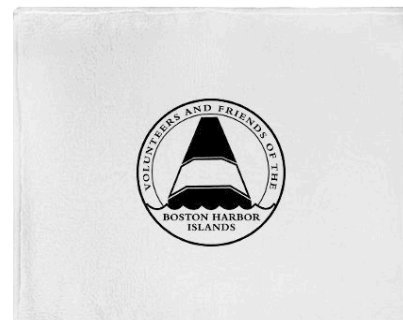
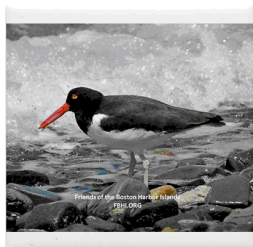
## **NEW Items for sale help support the Friends!**

We have a number of new items for sale. Please click on the links below to go to the FBHI Cafe Press Website.

New items include:

- Coffee Mugs
- Cold Drink Glasses
- Drink coasters
- Travel Bottle (Hot drinks)
- Sports Bottle
- Messenger Bags
- Tailgating blankets

**[CLICK HERE to see the Friends NEW ITEMS for Purchase!](#)**



Tile coasters

Coffee Mugs

Glasses

Stadium Blankets

*and more!*

(Robert at the camp site)



(Wynell at the display table)

## Our Summer on Grape Island 2011, by Wynell Scenna

What a lovely way to spend a summer, or at least the weekends, by camping out on one of the Harbor Islands. My husband Robert and I spent several weekends volunteering on Grape this summer. The rangers, Sam, Rob, and Sara, were enthusiastic about their job and a lot of fun to be with.

Overnight camping on the islands doesn't need to be difficult. We make use of the Hingham parking lot and water taxi, so it is a short distance to carry gear from the car to the boat. And to carry the gear we use the "old lady shopping cart" with pride. I, for one, do not like to carry water by hand.

Our volunteer site is in a remote area on the island and we set up our tarp first thing and made the site ready for other volunteers that would come out later.

Being out on the island at night is one of the biggest rewards for volunteering. Sam had a telescope and we did some star gazing. The evening campfires are warm, full of laughter, and sometimes a fox trots by. Deer and fireflies are seen along the paths.

Duties on Grape vary. The bittersweet is trying to take over and we are always cutting it back, particularly around the hardwood trees, so that they

do not get strangled by the vine. There were 3 new campsites being created and we helped clear them. They should be available by next season. Meeting the visitors is so much fun. There is such a variety of people that come out to the islands. I particularly enjoy giving edible plant tours and talking about the usefulness of each plant. The rangers are all skilled in kayaks and people couldn't wait to take the kayaks out around Slate and/or Grape. The rest of the time is spent walking the trails while directing people, trimming back wayward branches, picking up trash, picking berries, and enjoying the views. Not a bad way to spend the summer.



(Wynell and Robert hard at work)



(Robert cutting back brush)

***Thank you for your time and service!***

## **October 1 - Northern Lighthouse Tour** *(last tour of 2011 - Join us!)*

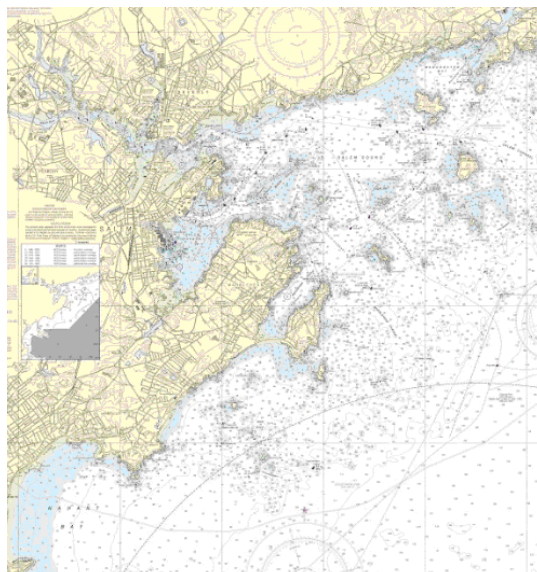






chart of Salem & Lynn Harbors

Departs **Boston Harbor Cruises dock** in Boston at One Long Wharf (next to the Aquarium and the Aquarium T-Stop). Snacks and rest-rooms on board. Tickets available now by mail or on line at [www.fbhi.org](http://www.fbhi.org). [FBHI Web Page](#)

We'll cruise North for close-up views of Hospital Point, Fort Pickering, Ten Pound Island, Marblehead, Gloucester Breakwater, Eastern Point and Bakers Island Lighthouses. The twin lights on Thatcher Island will be our furthest point North. We'll also see Boston Light and Graves Light.

Route is at the captains discretion, narration provided. Be prepared for chilly weather.

Please buy your tickets directly from FBHI so that we receive a portion of the proceeds.

## Harbor Fall Fest

*Celebrate autumn with a variety  
of harvest activities for all ages*



### Highlights Include:

Cider Press Demonstration

The DCR Mounted Unit

Wool Dying with Wildflowers

Peep at Fall Foliage

Music and more!

Designed Especially for kids!

When

October 15, Saturday from 2:00 - 4:00 pm

Where: Webb Memorial Park

399 River Street

Weymouth, MA 02191

FREE!

Sponsored by DCR and the Friends of the Boston Harbor Islands

**Volunteers are needed - please contact Carol Fithian at [fithiancj@verizon.net](mailto:fithiancj@verizon.net)**

## 7th Annual Boston Harbor Islands Regatta

Sail in the largest race in Boston Harbor or watch the boats from Georges Island.

About 100 boats are expected to participate in the regatta this year. You can watch this exciting race from the ramparts of Fort Warren on Georges Island. There are 2 start times, 10:00 am and 11:00 am; the race is over around 2:00 pm.



When:

- October 1, Saturday from 10:00 am - 4:00 pm

Where: Georges Island Program

Sailors **MUST** register and submit entry fee in advance. Online registration closes at 3:00 PM on Friday, September 24.

The event is free for observers; no reservations required, regular ferry fees apply.

Program Contact Information -[boha\\_information@nps.gov](mailto:boha_information@nps.gov) -(617) 223-8666



## Science Symposium

**October 19th** - The Park is sponsoring a terrific symposium that is open to the public. There is even food included in the registration. Cost is \$10.00 and \$5.00 for students. The entire schedule is on the link/web site. Go to:

[www.nps.gov/boha/parkmgmt/sciencesymposia.htm](http://www.nps.gov/boha/parkmgmt/sciencesymposia.htm)



## Thank you to Mass Memories Boston Harbor Islands Road Show "Roadies" and sponsors

**October 7th** - RSVP to Heather.Cole@umb.edu or call 617-287-5929 Boat cruise aboard MV Columbia Point 5:30-7:30. Thanks to UMass Marine Operations for providing the boat; Friends of the Boston Harbor Islands for the

food; Union Park Press for donating copies of "Discovering the Boston Harbor Islands" by Christopher Klein; and the Boston Harbor Islands Alliance for donating copies of "Boston Harbor Islands" by Pat Morss.



*Thank you Volunteers!*

**Boston Light Volunteers Appreciation Day October 16th** at the Coast Guard base; RSVP to Carol Fithian @ [fithiancj@verizon.net](mailto:fithiancj@verizon.net)

**Parkwide Appreciation day for all park volunteers is October 29th** trip to Plymouth Plantation. Registration will be through Mary Raczko.

-----

**Thanks to all the FBHI Boat Trip Volunteers this year for all their efforts organizing, leading tours, helping with tickets and merchandise sales, and "all the details behind the scenes that come up." From Suzanne Gall Marsh**

Weather conditions contributed to rescheduling the Rainsford and Great Brewster and Calf Island day trips. The Long Island and Little Brewster Island sunset trips were extra special. The lighthouse cruises with Boston Harbor Cruises continue to be another Friends legacy for public boat tours.

Thank you to: **David Dingley, Rab Sherman, Nancy Martin, Marguerite Krupp, Stephanie Schorow, Elizabeth Carella, Mimi Katz, David Skill, Suzanne Gall Marsh, Charlotte Knox, Ken Stein and Karen O'Donnell.**



FBHI member and volunteer **David Skill** who is a radio broadcaster on WATD in Marshfield did a second series on the Boston harbor islands. Check out

<http://959watd.com/staff/dave-skill/2011-boston-harbor-islands-series/>

to see photos and hear the audio interviews on Bumpkin, Grape, Rainsford, Peddocks, and Great Brewster Islands.

From the National Park Service (edited to fit):

We are welcoming a new member to the Boston Harbor Islands staff.

**Hugh Hawthorne** is now Youth and Visitor Services Manager for Boston Harbor Islands National Recreation Area. Hugh has worked in a number of national parks including Carlsbad Caverns, North Cascades, Mount Rushmore, Death Valley and Yellowstone. He started working for the National Park Service while a geology graduate student at the University of Idaho. His most recent position was Chief of Interpretation and Education for Devil's Tower National Monument in Wyoming.

Hugh is looking forward to experiencing Boston Harbor Islands National Recreation Area and getting to know the partners that keep it operating for the benefit of the public.

**RENEW YOUR MEMBERSHIP OR DONATE TO THE FRIENDS  
ONLINE WITH A CLICK OF YOUR FINGERS**

If you haven't renewed your membership you can do it via the FBHI web site and PayPal by clicking [here](#).



Please consider donating to the Friends. Please [click here.](#)

[Forward email](#)



This email was sent to sschorow@comcast.net by [chairmanfbhi@gmail.com](mailto:chairmanfbhi@gmail.com) | [Update Profile/Email Address](#) | Instant removal with [SafeUnsubscribe™](#) | [Privacy Policy](#).

Friends of the Boston Harbor Islands | 30 Shipyard Drive #202 | Hingham | MA | 02043